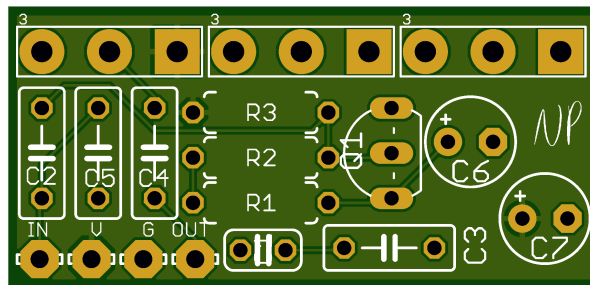


# Naga Viper

## Components

<b>R1</b>	8K2	<b>Q1</b>	2N2222A
<b>R2</b>	68K		
<b>R3</b>	220K	<b>BOOST</b>	10K Linear
		<b>RANGE</b>	500K Log
<b>C1</b>	47pF	<b>HEAT</b>	1K Linear
<b>C2</b>	3n3		
<b>C3</b>	68nF	<b>C6</b>	47uF
<b>C4</b>	10nF	<b>C7</b>	47uF
<b>C5</b>	1nF		



## Board Connections

The PCB connections are labelled as the following:

I - Input, O - Output, V - 9V DC in, G - Ground

Potentiometers are connected from pin 1 to the square pad on the PCB. Jack sleeves and DC centre pin should be connected to ground. V should be connected to the positive pin of the DC connector.

